

# CONNECTED AUTOMATED MOBILITY



LTE    HYBRID    5G



# ALREADY UP AND RUNNING



Connected Traffic Cloud  
Supporting Connected Automation

Test Site in Stockholm/Kista



[Click above to play video !](#)

# 5G

5G Test Network  
in Operation

# CONNECTED AUTOMATION



Trials together with Scania

Connectivity and Cloud supporting Automation



Click on trucks to start optional video

5G

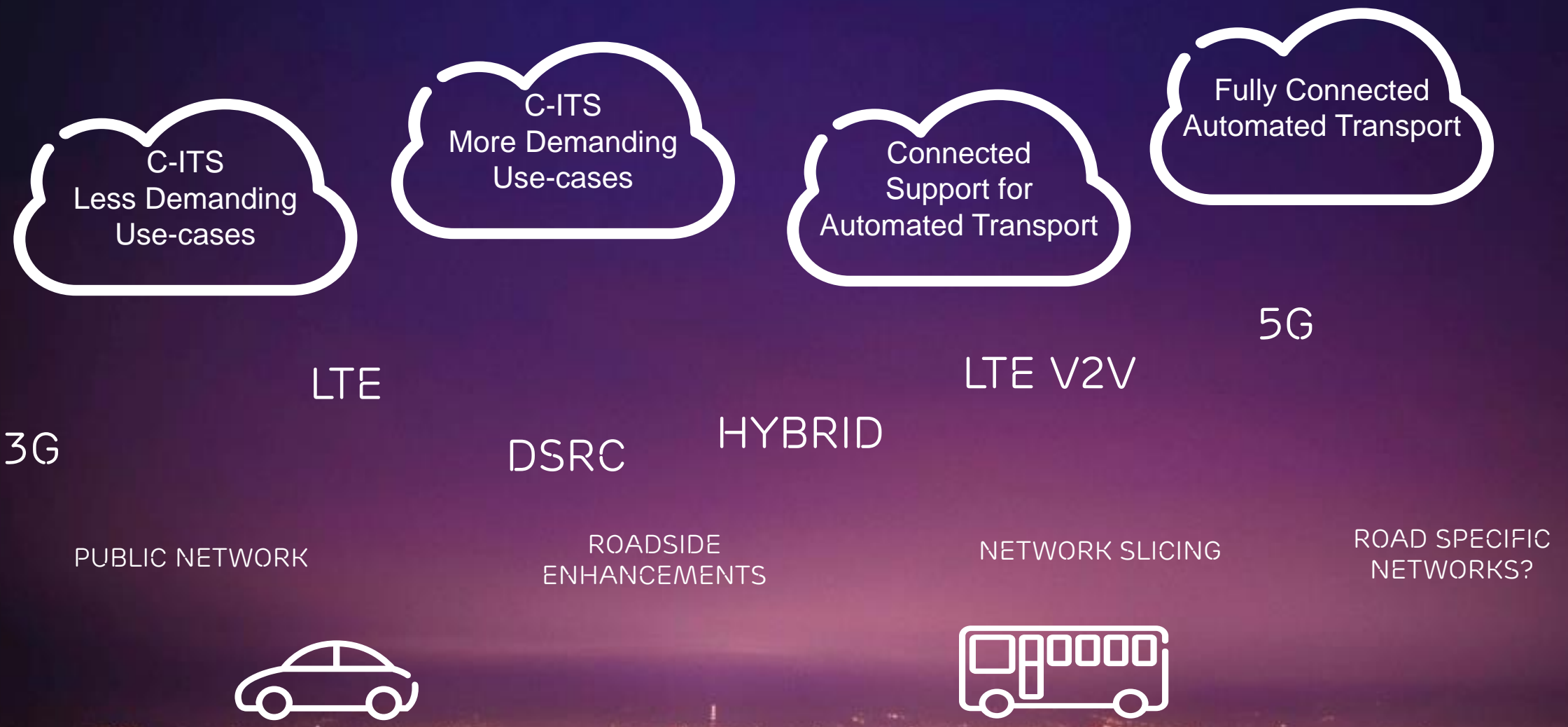
5G Test Network  
in Operation

# SLIPPERY ROAD ALERT

Part of Connected Safety



# FINDING A SUSTAINABLE ROADMAP FOR ICT SUPPORTING C-ITS AND CONNECTED AUTOMATION

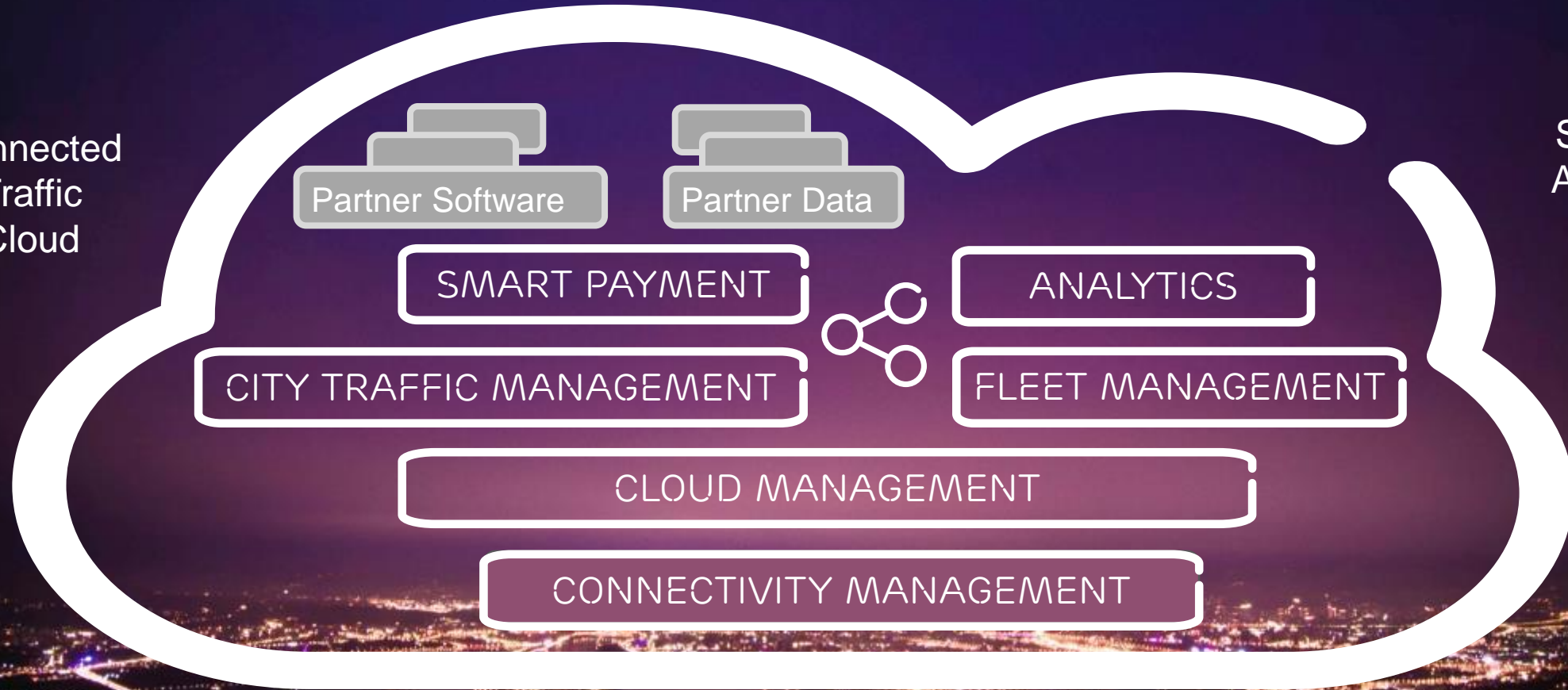


# WHAT'S UP THERE?



Connected  
Traffic  
Cloud

Supporting  
Automation  
and  
Mobility  
Services



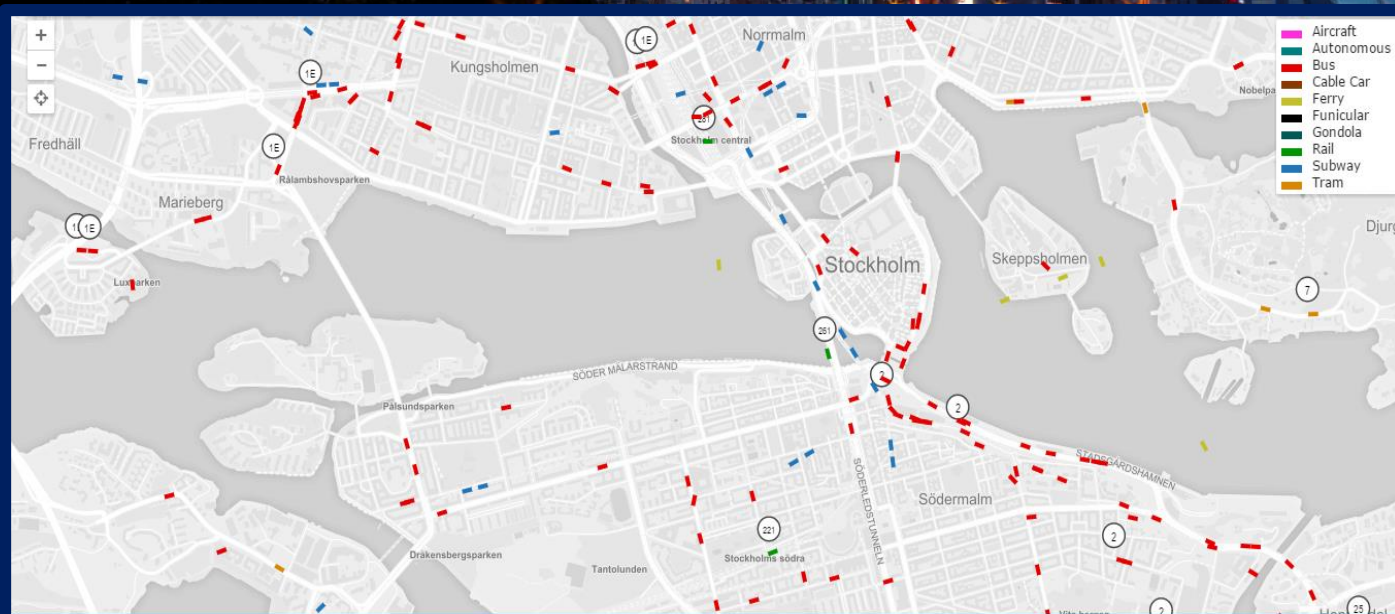
LTE HYBRID 5G

# ERICSSON CONNECTED TRAFFIC CLOUD

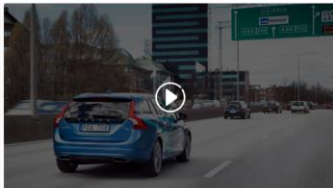


## CONNECTING ROAD INFRASTRUCTURE AND TRAFFIC

### ENABLING CONNECTED, COOPERATIVE AND AUTOMATED TRANSPORT



**Camera 034QW**  
Gothenburg, Vasagatan



Device Model: HTC 023PR  
Device Serial Number: 4646413564W194  
Installed on: 2015-11-10  
Running hrs: 5487 hrs  
Last Service Check: 2016-01-05  
Next Schedule Check: 2017-03-09  
Device Internal ID: GOT034QW-C

**Error Code 954K**  
2016-05-05 14:37  
Camera stopped working due to failure of Protocol 039W Initialization. Check system terminal for additional information or refer to Device Service Support.

Troubleshoot Inquiry Inspection

2016-09-20 CEST  
09:02:24

 **CONNECTED TRAFFIC CLOUD**



Click above to start live demo in browser

# DRIVE SWEDEN



Strategic Innovation Program launched by the Swedish government aiming to make Swedish Industry leading in the area of Automated Transport and Mobility Services



Not just self-driving vehicles, but all kind of automation applied on all transport modes

Leading partners working together





# DRIVING CONNECTED AUTOMATION



## OUR OFFERING

- Connectivity supporting Transport Automation
- Connected Cloud functionality, with services supporting Transport Automation
- Leading partners and development roadmap



LTE HYBRID 5G



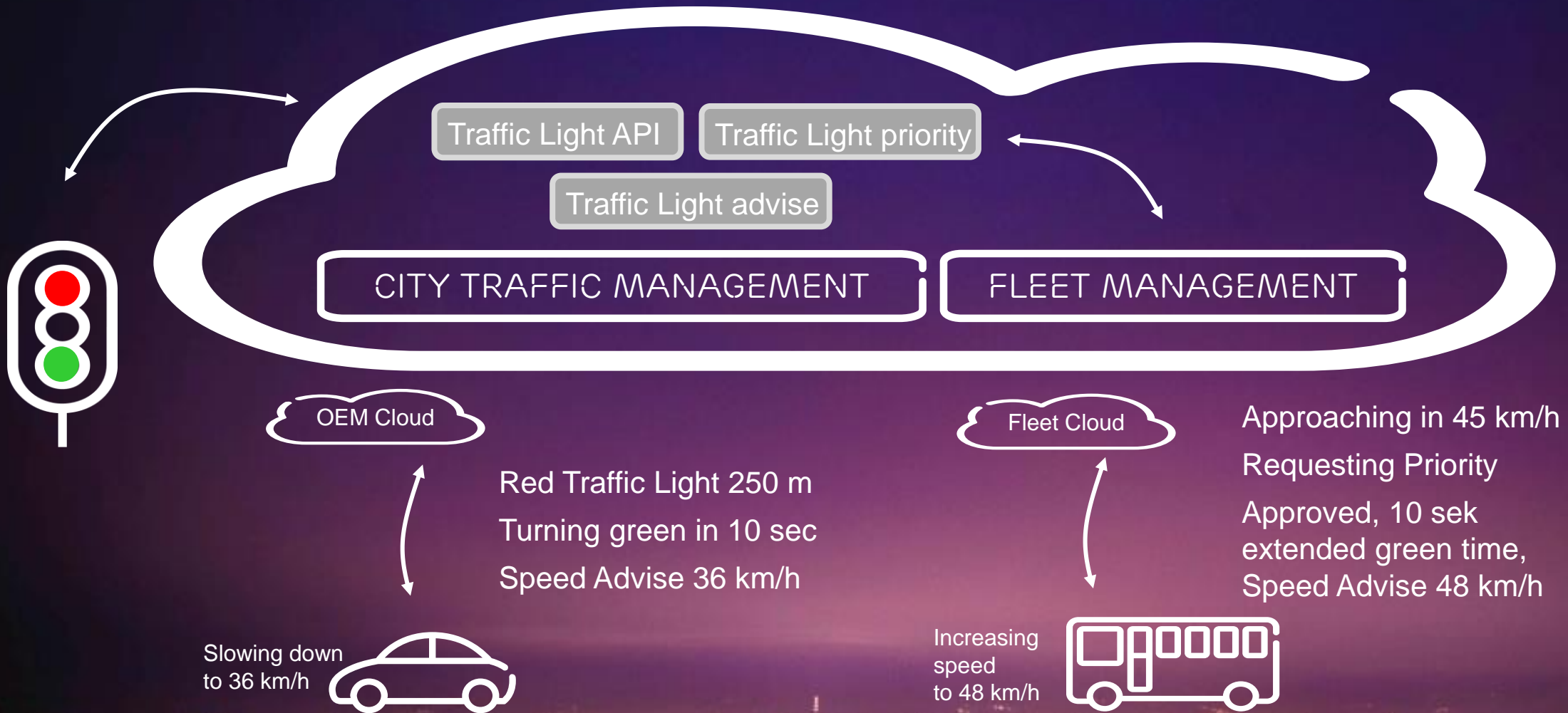


**ERICSSON**



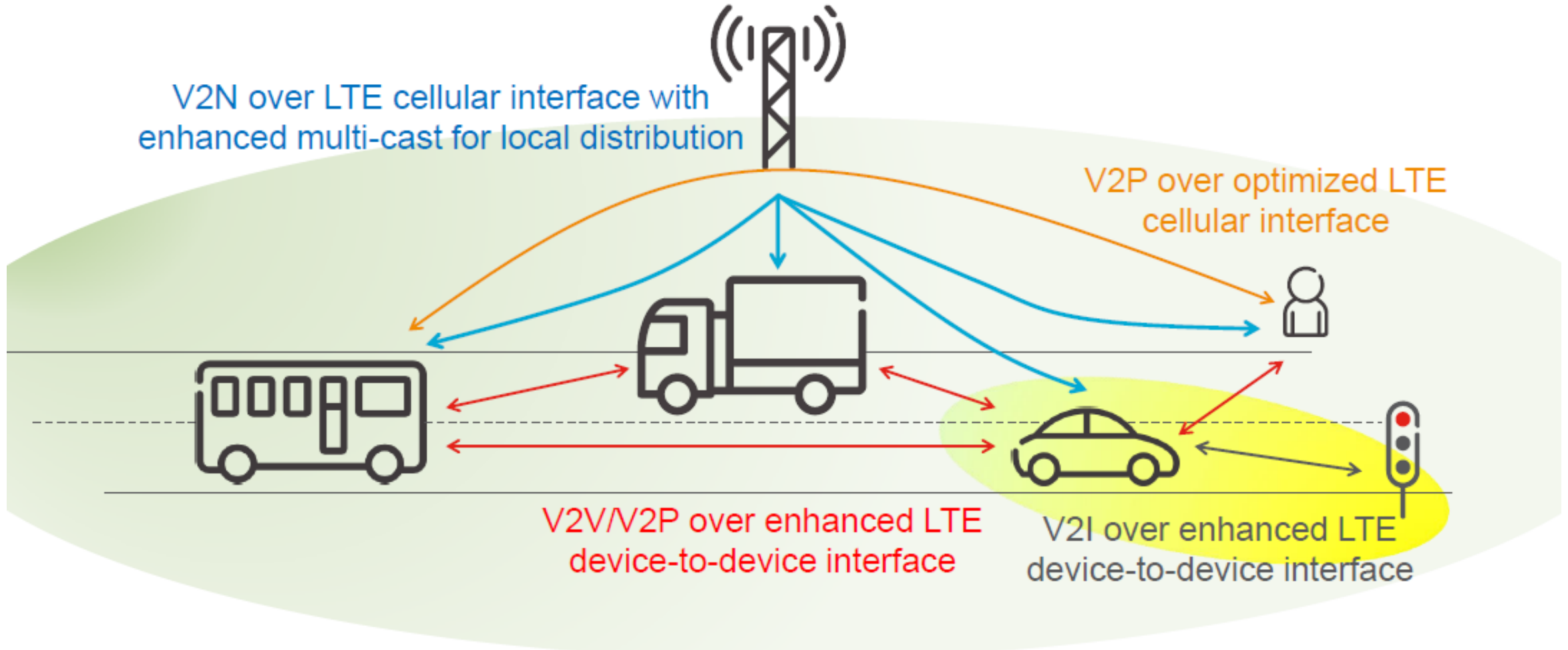
# EXTRA MATERIAL

# USE CASE EXAMPLE AUTOMATED TRAFFIC LIGHT ASSIST



# LTE-BASED V2X

## How it works



# WHAT CAN WE ACHIEVE?



## SMARTER MOBILITY

Better traffic flow

Saving lives

Less congestion

Less emissions

Faster from A to B

Cleaner air

Door to door travel

Energy efficient

Less accidents

More cost-efficient



## BETTER CITY LIFE

Reclaim the streets

Don't have to drive

Less parked cars on the streets

Don't have to own a car

Make cities more liveable

Don't have to park

Mobility to everybody

Better use of time



# DRIVE SWEDEN MASTERPLAN SYSTEMS AND SERVICES TO ENABLE AUTOMATION AND MOBILITY SERVICES



2016

2017

2018

2019

2020

2021

2022

Mobility Services



Vehicles in traffic

Fleet and Traffic Management for Automated Transport and Mobility Services

TM 0.9  
Initial Fleet and Traffic Mgmt

TM 1.0  
Fleet Management and Traffic Management prepared for Aut.

TM 2.0  
Supporting Partial Automation

TM 3.0  
Supporting Automation

TM 4.0  
Supporting Automation and MaaS

TM 5.0  
Supporting extended Automation and MaaS

Cloud Infrastructure

Drive Sweden CLOUD supporting Automation and Mobility Services

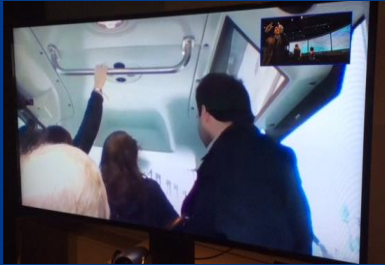
4G

5G Pilot

5G



### Video Monitor



Vehicle: 45  
Speed: 0.0 km/h  
Battery: 60%  
Mode: Auto / Stationed

Vehicle: 48  
Speed: 0.0 km/h  
Battery: 67%  
Mode: Auto / Stationed

12 sec  
25 km/h

5 sec  
12 km/h

### Fleet Monitor

- SL
- EasyMile
- Nobina

### Mobility Analytics

- <10%
- 10-50%
- >50%

### Automated Bus Route Management

- Scania
- Nobina

### Traffic Management

- Traffic Lights
- Traffic Information
- Bus Lanes
- Parking

### Communication

- LTE
- 5G
- 11p

### Mobility as a Service



### Remote Control



179  
Själentura station

518  
Vindkraftstera





**ERICSSON**